

SCOTTSDALE AIRPARK HANGAR FOR LEASE

10,976± RENTABLE SQ. FT.

7345 E ACOMA DRIVE • HANGAR 4 • SCOTTSDALE AZ 85260

**DIVISIBLE FROM
ONE LARGE HANGAR
TO TWO INDIVIDUAL
HANGARS**

For additional information or to schedule a tour please contact Randy or Amanda



Randy Shell
Designated Broker
C 480.694.4100
randy@shellcommercial.com



Amanda Wright
Senior Associate
C 480.236.0037
amanda@shellcommercial.com



All information contained herein is subject to prior sales and leasing. This information has been secured from sources we believe to be reliable, but we make no representation or warranties, expressed or implied, as to the accuracy of this information.

HANGAR FEATURES:

SIZE: ±10,976 RSF (±9,389 SF Usable)

- Divisible from one (1) large hangar to two (2) individual hangars
- Four (4) Bifold electric doors
 - One (1) 39'10" wide, 16' door clear height
 - One (1) 53'10" wide, 16' door clear height
 - One (1) 53'10" wide, 17' door clear height
 - One (1) 39'10" wide, 17' door clear height
- Two (2) large Hunter Industrial fans for cooling
- ±19' ceilings from floor to metal crossbeams
- ±16'4" from floor to fans

TAXIWAY ACCESS: Taxiway 2 which can accommodate aircraft up to 70,000 lbs

FUEL FARM: Access to on-site 20,000-gallon Jet 'A' fuel farm saving thousands of dollars over city fuel charges.

OTHER AMENITIES: Access to Building's common areas including lobby conference room to hold meetings, "pilot's kitchen", restrooms, and multiple seating areas.

ZONING: I-1, Light Industrial, City of Scottsdale



PILOT'S KITCHEN

BUILDING FEATURES:

- Ideal location for company headquarters - building also offers three stories of Class “A” office space with availability
- Beautiful contemporary lobby area with tenant directory, waiting areas with guest seating, conference room and restrooms
- Convenient and impressive drive-up front entrance with parking for guests
- Covered parking available
- Secure access control throughout building in common areas
- Common restrooms on each office floor
- Amazing location near high-end restaurants and shopping such as Kierland, Scottsdale Quarter, The Promenade, and future new development, The Parque
- Direct northbound/southbound access from Scottsdale Road with signal light at Scottsdale Road and Acoma Drive



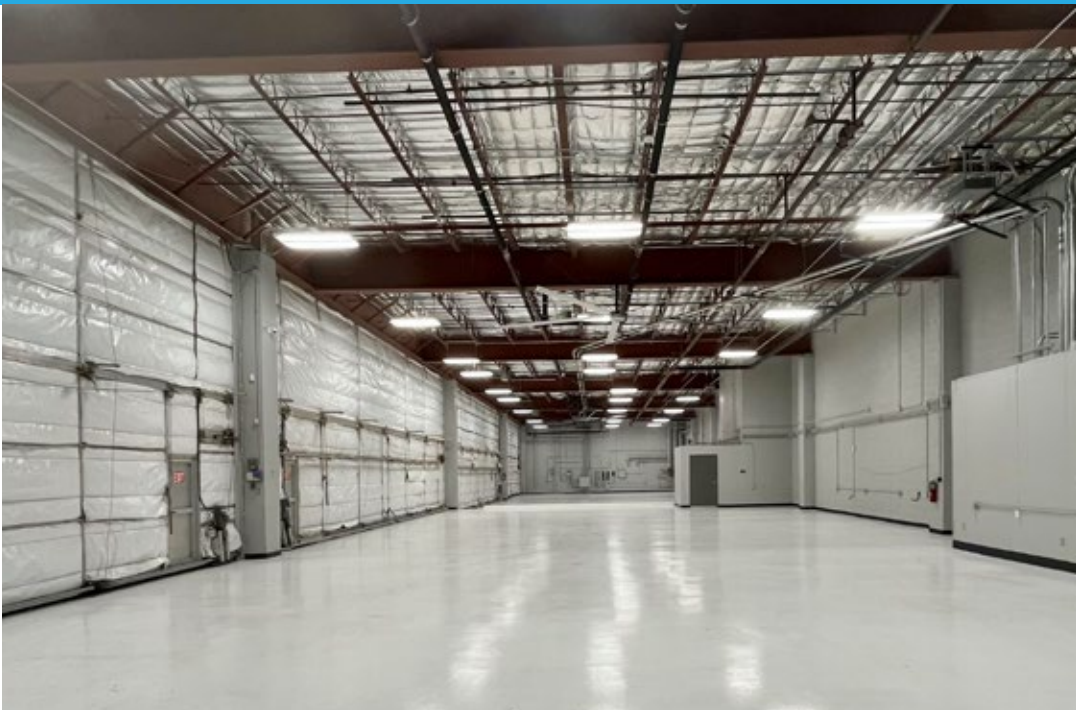
BUILDING INTERIOR PHOTOS

7345 E ACOMA DRIVE • HANGAR 4 • SCOTTSDALE AZ 85260



HANGAR / EXTERIOR PHOTOS

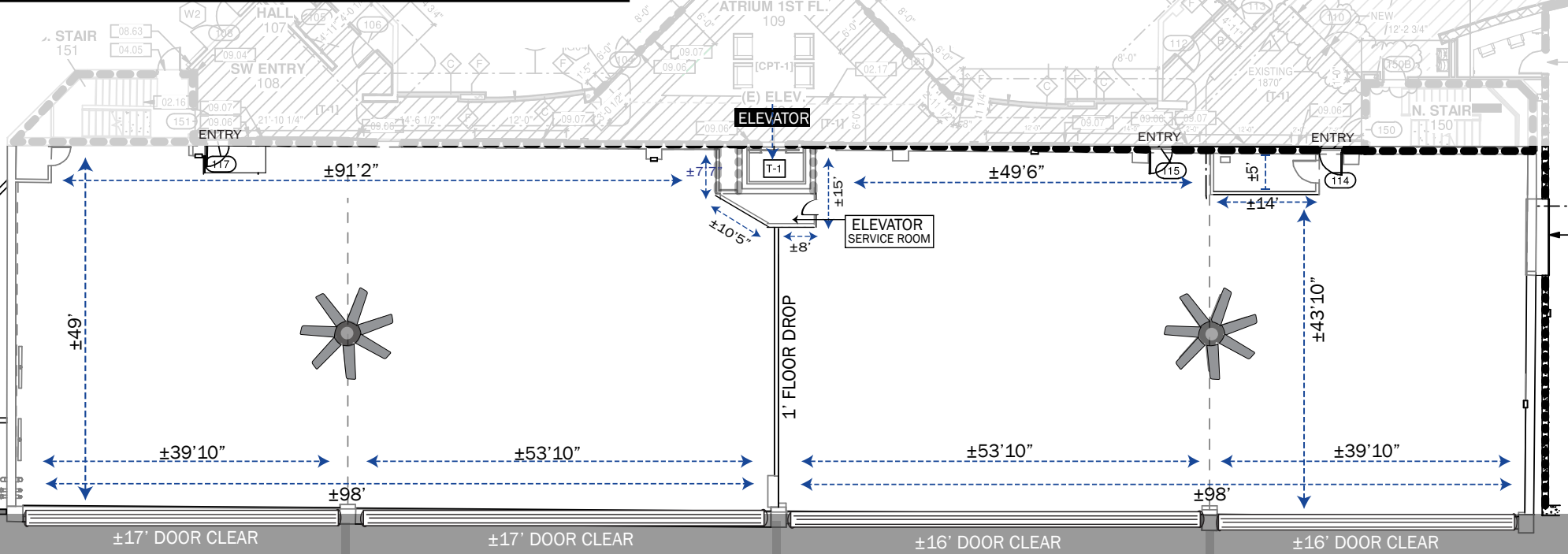
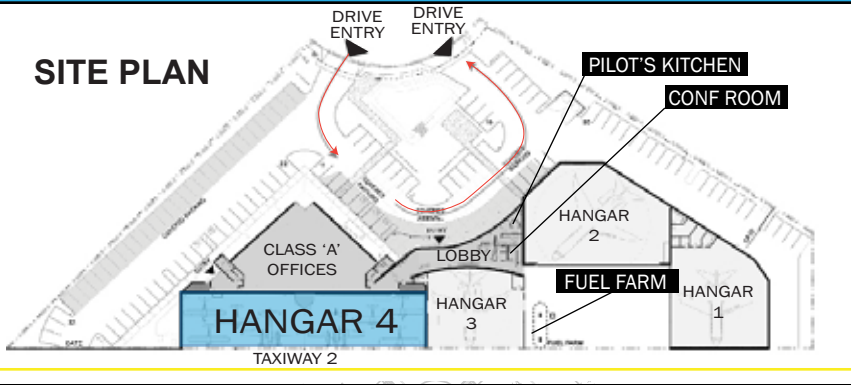
7345 E ACOMA DRIVE • HANGAR 4 • SCOTTSDALE AZ 85260



All information contained herein is subject to prior sales and leasing. This information has been secured from sources we believe to be reliable, but we make no representation or warranties, expressed or implied, as to the accuracy of this information.

7345 E ACOMA DRIVE • HANGAR 4 • SCOTTSDALE AZ 85260

SITE PLAN



FLOOR PLAN - 1ST FLOOR

3/32" = 1'-0"

TAXIWAY 2

NOT TO SCALE

All information furnished regarding property for sale, rental or financing is from sources deemed reliable, but no warranty or representation is made to the accuracy thereof and same is submitted to errors, omissions, change of price, rental or other conditions, prior to sale, lease or financing or withdrawal without notice. No liability of any kind is to be imposed on the broker herein. This information has been secured from sources deemed reliable, however, we make no warranties as to its accuracy.



7345 E ACOMA DRIVE • HANGAR 4 • SCOTTSDALE AZ 85260

